

# TC70 Series Rugged Touch Computer

## YOUR FRONT LINE TO A SMARTER ENTERPRISE

Your employees need enterprise class handheld computers to communicate and access information seamlessly in order to work more efficiently and better serve your customers — yet they want a device that is every bit as refined and easy-to-use as their own consumer devices. Now, you can give them both with the TC70 Series. With flexible OS support, you can choose between two of the most advanced and intuitive mobile operating systems — Android™ and Windows 10 IoT Mobile Enterprise — both fortified for use in the enterprise. The rugged design holds up even in the most demanding environments and the TC70 Series can double as a voice communications device. You can automate the capture of just about any type of business intelligence with the embedded scanner and camera. And the full complement of accessories and cutting edge technology will serve your business for years to come, for an unsurpassed return on investment. Better serve your customers in retail, manufacturing, and operations with the TC70 Series. Real competitive advantage — delivered.



TC70 (Android)

TC70x (Windows  
10 IoT Mobile  
Enterprise)

TC70x (Android)

### Enterprise-class Android — with Multiple Configurations to Meet Your Needs

With the TC70 Series, you can leverage the power of Android, while choosing the configuration that best fits your technology and business needs. Every Android TC70 Series ships with Mobility Extensions (Mx), a series of features that make Android a more robust enterprise-class operating system. Mx minimizes IT support time and maximizes worker productivity and device uptime by providing better control of your mobile devices, application access and Wi-Fi performance and security. Standard Configuration TC70 and TC70x Android devices come with Google Mobile Services (GMS) which provides integrated Google applications such as Gmail and Google Maps. Professional Configuration TC70 and TC70x Android devices ship without GMS, removing GMS applications and services. Both configurations are based on Android Open Source (AOSP) and ship with respective Android Enterprise functionality.

### Microsoft Windows for the Enterprise

The TC70x is also available with Windows 10 IoT Mobile Enterprise, which brings Microsoft's enterprise-grade security, manageability and connectivity to a natural user interface that's easy to use. You get numerous productivity-enhancing features such as multiple user profiles, out

of the box support for barcode scanning and other peripherals, as well as native support for popular enterprise tools like Skype for Business and MS Office. And, with Continuum and Miracast wireless display support, Windows 10 IoT Mobile Enterprise delivers PC-like productivity — Office apps scale up beautifully to a larger screen.

### World-Class Data Capture

Give your employees the tools they need to work faster and smarter. The integrated enterprise-class imager offers Zebra's proprietary PRZM Intelligent Imaging technology, a megapixel sensor and advanced optics, which work together to deliver data capture performance in a class of its own. Workers can capture 1D and 2D barcodes in virtually any condition, at lightning speed. The rear-facing camera enables the easy capture of high-resolution photos, signatures, videos and more, allowing you to capture more types of business intelligence to streamline more business processes. The front camera allows workers to place a video call to get the help they need — and provide customers with that personal touch. Near Field Communications offers simple Tap and Pair device pairing with compatible printers, and automates identity verification at facility entry points. \*Identity verification supported on Android only.

## SPECIFICATION SHEET

### ZEBRA TC70 SERIES TOUCH COMPUTER

#### Maximum Data Entry Flexibility with an Industry Leading Dual Mode Touch Panel

Let your users choose their preferred data input pair: finger and gloved finger or finger and stylus — ideal for crisp signature capture. The intelligent display automatically adjusts as needed, unlike competitive devices that require setting adjustments every time the user switches data input method. And the large 4.7 in. display takes the capacitive touch experience to the next level — it works even if it's wet. \*Glove support and dual mode touch panel are available on Android only.

#### Comprehensive Audio Functionality for a New Level of Voice Flexibility

With up to four times the loudness of popular smartphones and noise cancelling technology, the TC70 Series provides crystal clear audio on both ends of every call. Android models support Workforce Connect Push-to-Talk Express to give workers walkie-talkie style voice communications right out of the box. Windows 10 IoT Mobile Enterprise offers integrated support for Skype for Business\*. The result? A highly collaborative workforce that can respond instantly to customer needs. \*Skype for Business Voice requires Zebra WLAN infrastructure for optimal performance.



#### Mobility DNA

Every strand of your Android mobility platform is simpler with Zebra's Mobility DNA. That's because, from the start, you have the industry's most comprehensive suite of mobility must-haves to accelerate your solution. More off-the-shelf end-user apps, more robust administration utilities and easier

app development. Purpose built for the enterprise, Mobility DNA makes ease, confidence and value intrinsic to your investment and our full line of Android mobile computers.

#### Rugged and Ready for All-day Every Day Enterprise Use

The TC70 Series is ready for the demands of everyday life in the business world, tested and proven to operate reliably after multiple 6 ft./1.8 m drops to concrete and 2,000 consecutive 3.2 ft./1 m tumbles in our punishing tumble test. With IP65 and IP67 sealing, you get a device that is dust-tight and can survive complete immersion in water, making it ideal for use in the retail backroom, warehouse floor, in outdoor shopping areas or outside on a receiving dock. The Corning Gorilla Glass touch panel and scanner exit window bring a new level of durability to two of the most vulnerable components.

#### A Robust Accessory Family to Meet Any Enterprise Need

The comprehensive family of accessories includes a snap-on magnetic stripe reader for mobile payment, a Bluetooth mobile payment device for magnetic stripe and Chip and PIN, a holster, a hand strap, a snap-on trigger handle and more, allowing you to easily meet the needs of many different types of users performing many different types of tasks.<sup>1</sup> And multi-slot battery chargers and the unique ShareCradle — a multi-slot cradle that can accommodate the TC70 Series and future Zebra devices — make backroom management easy and cost effective.

#### Boost efficiency and customer service with the TC70 Series in:

##### Retail

- Associates:
  - Price checks
  - Inventory checks
  - Item locator
  - Price changes/price audits
  - Line busting
  - Assisted selling
  - Product comparison
  - Electronic coupons (mobile phone displays)
  - Market research
  - Store inventory transfers
  - Gift registry lookup
  - Financial/loyalty applications
  - Click and mortar/catalogue orders
  - Training
- Mobile payment
- Inventory management
- Voice communications
- Managers:
  - Workforce management
  - Planogram management
  - Promotion compliance
  - Merchandising

##### Manufacturing

- Asset management
- Building maintenance
- Supervisor/manager tasks:
  - Workforce management
  - Supplier management
  - Management of customer data
  - Management of product information


## THE TC70 SERIES — THE PROFESSIONAL GRADE DEVICE FOR THE ENTERPRISE.


For more information, visit [www.zebra.com/tc70series](http://www.zebra.com/tc70series) or access our global contact directory at [www.zebra.com/contact](http://www.zebra.com/contact)

SPECIFICATION SHEET

ZEBRA TC70 SERIES TOUCH COMPUTER

TC70 Series Specifications

PHYSICAL CHARACTERISTICS	
Dimensions	6.3 in. L x 3.3 in. W x 1.1 in. D 161 mm L x 84 mm W x 28 mm D
Weight	13.3 oz./376 g
Display	4.7 in. High Definition (1280 x 720); exceptionally bright, outdoor viewable; optically bonded to touch panel
Imager Window	Corning Gorilla Glass
Touch Panel	Dual mode capacitive touch with stylus, finger or gloved fingertip input (conductive stylus sold separately) <sup>2</sup> ; Corning Gorilla Glass
Backlight	LED backlight
Power	 PowerPrecision/PowerPrecision+ <sup>3</sup> ; Improved battery technology for longer cycle times and real-time visibility into battery metrics for better battery management. Li-Ion 3.7 V, 4620 mAh
Expansion Slot	TC70: User accessible MicroSD with 32GB SDHC and up to 64GB SDXC TC70x: User accessible MicroSD with 32GB SDHC and up to 128GB SDXC
Network Connections	USB 2.0 OTG High Speed (host and client); WLAN
Notification	Audible tone; multi-color LEDs; vibration
Keypad	On-screen keypad; Enterprise Keyboard
Voice and Audio	Three microphone support with noise cancellation; vibrate alert; speaker; Bluetooth wireless headset support

PERFORMANCE CHARACTERISTICS	
CPU	TC70: 1.7 GHz dual core processor TC70x Android-M: 1.8 GHz hex core 64 bit processor TC70x Windows 10 IoT Mobile Enterprise: 1.8 GHz hex core 64 bit processor (Snapdragon 808)
Operating System	 TC70: Android 5.1 Lollipop with Zebra's Mobility Extensions (Mx) TC70x: Android 6.0 Marshmallow with Mx or Windows 10 IoT Mobile Enterprise
Memory	TC70: 1 GB RAM / 8 GB Flash pSLC TC70x: 2 GB RAM / 16 GB Flash pSLC or 4 GB RAM / 32 GB Flash pSLC

USER ENVIRONMENT	
Operating Temp.	-4° F to 122° F/-20° C to 50° C
Storage Temp.	-40° F to 158° F/-40° C to 70° C
Humidity	5% to 85% non-condensing
Drop Specification	Multiple 6 ft./1.8 m drop to concrete across full operating temperature range, multiple 8 ft./2.4 m drop to concrete at room temperature per MIL-STD 810G
Tumble Specification	2,000 3.2 ft./1.0 m tumbles; meets and exceeds IEC tumble specifications
Sealing	IP65 and IP67 per applicable IEC sealing specifications
Vibration	4 g's PK Sine (5 Hz to 2 kHz); 0.04g2/Hz Random (20 Hz to 2 kHz); 60 minute duration per axis, 3 axis

USER ENVIRONMENT (CONTINUED)	
Thermal Shock	-40° F to 158° F/-40° C to 70° C rapid transition
Electrostatic Discharge (ESD)	+/-15kVdc air discharge +/-8kVdc direct discharge +/-8kVdc indirect discharge

AUDIO	
High quality speaker phone with up to 108 dB SPL volume; wireless (Bluetooth) headset support; PTT headset support <sup>4</sup> ; handset/ speakerphone modes	

INTERACTIVE SENSOR TECHNOLOGY (IST)	
Light Sensor	Automatically adjusts display backlight brightness
Motion Sensor	3-axis accelerometer for dynamic screen orientation

DATA CAPTURE <sup>5</sup>	
Scanning	SE4750 imager (1D and 2D); extraordinary range: Scan range – Code 39 barcode: 20 Mil: 1.8 in. to 32.0 in./4.5 cm to 81.3 cm 3 Mil: 3.1 in. to 5.6 in./7.9 cm to 14.2 cm
Camera	Rear – 8 MP autofocus; f/2.4 aperture (TC70 and TC70x Windows 10 IoT Mobile Enterprise) Rear – 13MP autofocus (TC70x Android-M) Front – 1.3 MP fixed focus (TC70/TC70x)
NFC	ISO 14443 Type A and B; FeliCa <sup>6</sup> , and ISO 15693 cards. P2P mode and Card Emulation via UICC and Host

WIRELESS LAN	
Radio	TC70: IEEE 802.11a/b/g/n/d/h/i/k/r TC70x Android: IEEE 802.11a/b/g/n/d/h/i/r/ac TC70x Windows 10 IoT Mobile Enterprise: IEEE 802.11a/b/g/n/d/h/i/w/ac
Data Rates	<b>TC70</b> 5GHz: 802.11a/n — up to 150 Mbps; 2.4GHz: 802.11b/g/n — up to 72.2 Mbps <b>TC70x Android</b> 5GHz: 802.11a/n/ac — up to 866.7 Mbps; 2.4GHz: 802.11b/g/n — up to 144.4 Mbps <b>TC70x Windows 10 IoT Mobile Enterprise</b> 5GHz: 802.11a/n/ac — up to 866.7 Mbps; 2.4GHz: 802.11b/g/n — up to 300 Mbps
Operating Channels	TC70: Chan 1 - 13 (2412 - 2472 MHz); Chan 36 - 165 (5180 - 5825 MHz); Channel Bandwidth: 20, 40 MHz TC70x: Chan 1 - 13 (2412 - 2472 MHz); Chan 36 - 165 (5180 - 5825 MHz); Channel Bandwidth: 20, 40, 80 MHz Actual operating channels/ frequencies depend on regulatory rules and certification agency
Security and Encryption	TC70: WEP (40 or 104 bit); WPA/WPA2 Personal (TKIP, and AES); WPA/WPA2 Enterprise (TKIP, and AES) — EAPTTLS (PAP, MSCHAP, MSCHAPv2), EAP-TLS, PE APv0-MSCHAPv2, PE APv1-EAP-GTC, EAP Fast and LEAP TC70x Android: WEP (40 or 104 bit); WPA/WPA2 Personal (TKIP, and AES); WPA/WPA2 Enterprise (TKIP, and AES) — EAP TTLS (PAP, MSCHAP, MSCHAPv2), EAP-TLS, PEAPv0-MSCHAPv2, PEAPv1-EAP-GTC and LEAP TC70x Windows 10 IoT Mobile Enterprise: WEP (40 or 104 bit); WPA/WPA2 Personal (TKIP, and AES); WPA/WPA2 Enterprise (TKIP, and AES) — EAPTTLS (MSCHAPv2), EAP-TLS, PE APv0-MSCHAPv2, FIPS DIM

Continued on next page


## SPECIFICATION SHEET

### ZEBRA TC70 SERIES TOUCH COMPUTER

# TC70 Series Specifications (continued)

WIRELESS LAN (CONTINUED)	
<b>Multimedia</b>	TC70/TC70x Android: Wi-Fi Multimedia™ (WMM) and WMM-PS TC70x Windows 10 IoT Mobile Enterprise: WMM
<b>Certifications</b>	TC70: WFA (802.11n, WMM, WMM-PS, Wi-Fi Direct, Miracast, Soft-AP, WPS 2.0) and Cisco CCXv4 TC70x Android: WFA (802.11n, WMM-PS) TC70x Windows 10 IoT Mobile Enterprise: WFA (802.11n, 802.11ac, PMF, WMM)
<b>Fast Roam</b>	TC70/TC70x Android: PMKID caching, Opportunistic Key Caching (OKC), Cisco CCKM and FT (802.11r) TC70x Windows 10 IoT Mobile Enterprise: PMKID caching, Opportunistic Key Caching (OKC)

WIRELESS PAN	
<b>Bluetooth</b>	Class 2, Bluetooth v4.0 (Bluetooth® Smart technology) BT Wideband support HFPv1.6 Bluetooth v4.1 LE (TC70x only)

COMMUNICATION AND MESSAGING	
 Workforce Connect <sup>7</sup> PTT Express (included) provides instant push-to-talk small group communications across Wi-Fi networks. Workforce Connect PTT Pro (supported) provides a scalable network agnostic push-to-talk solution which also includes messaging, location services and two-way radio integration. Workforce Connect Voice client (supported) enables the TC70 Series to function as a full featured mobile telephone with multi line capability across Wi-Fi networks.	

Skype for Business (TC70x Windows 10 Mobile Enterprise only); Skype for Business Voice requires Zebra WLAN infrastructure for optimal performance.

1. Magnetic Stripe Reader not supported on TC70x Windows 10 Mobile Enterprise.
2. TC70x Windows 10 IoT Mobile Enterprise supports finger/stylus input only.
3. PowerPrecision+ batteries are available only on TC70x Android models and provide advanced state of health and advanced state of charge metrics.
4. PTT not supported on TC70x Windows 10 Mobile Enterprise.
5. Please refer to the TC70 Series User Guide or Integrator Guide for full data capture specifications.
6. ISO 14443 Type FeliCa supported on TC70x models only.
7. Workforce Connect supported on Android only.

Specifications subject to change without notice and some features may vary by model.

## ADDITIONAL MOBILITY DNA SOLUTIONS



Mobility DNA solutions help you get more value out of our mobile computers by adding functionality as well as simplifying deployment and management of our mobile devices. For more information on these Zebra-only features, please visit [www.zebra.com/mobilitydna](http://www.zebra.com/mobilitydna)



**Enterprise Keyboard**



**Stage Now**



**EMDK**



**SimulScan**



**Enterprise Home Screen**



**AppGallery**



**Enterprise Browser**

Mobility DNA is available on Android only and supported features may vary by model.

## WARRANTY

Subject to the terms of Zebra's hardware warranty statement, the TC70 Series is warranted against defects in workmanship and materials for a period of 1 (one) year from the date of shipment. For complete warranty statement, please visit: <http://www.zebra.com/warranty>

## RECOMMENDED SERVICES

Zebra OneCare; Managed Device Service



reddot award 2016  
winner industrial design

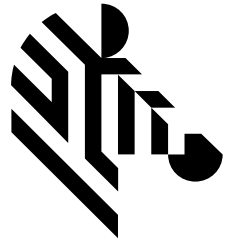


**NA and Corporate Headquarters**  
+1 800 423 0442  
[inquiry4@zebra.com](mailto:inquiry4@zebra.com)

**Asia-Pacific Headquarters**  
+65 6858 0722  
[contact.apac@zebra.com](mailto:contact.apac@zebra.com)

**EMEA Headquarters**  
[zebra.com/locations](http://zebra.com/locations)  
[mseurope@zebra.com](mailto:mseurope@zebra.com)

**Latin America Headquarters**  
+1 847 955 2283  
[la.contactme@zebra.com](mailto:la.contactme@zebra.com)



**ZEBRA**

# **TC7X ACCESSORIES GUIDE**

# ZEBRA TC70/75 & 70x/75x Accessory Ecosystem



## **A robust accessory family to tailor the TC70(x)/TC75(x) Series for any enterprise**

The Comprehensive family of accessories includes a snap-on magnetic stripe reader for mobile payment, a holster, a hand strap, a snap-on trigger handle and more, allowing you to easily tailor the TC70(x)/TC75(x) to meet the needs of many different types of users performing many different types of tasks. Multi-slot battery chargers and the unique ShareCradle – a multi-slot and 2-slot cradle system that can accommodate charge-only or data transfer needs for the TC70(x)/TC75(x) and future Zebra mobile computers– make backroom management easy and cost effective.



# ZEBRA Batteries / Battery Charging Accessories

## 4620 mAh Battery

### BTRY-TC7X-46MPP-01

TC7X PowerPrecision+ spare lithium ion Battery, 4620mAh (single) Advanced new battery technology, provides a higher level of intelligence (State of Charge and State of Health) to deliver maximum performance.



### BTRY-TC7X-46MPP-10

10-Pack



## Charging LED indicators

Off	Battery not charging
Solid Amber	Healthy battery charging
Solid Green	Healthy battery charging complete
Fast Blink Red	Charging error
Solid Red	Unhealthy battery charging or fully charged

## Spare Battery Charging Options

### SAC-TC7X-4BTYPP-01

Drop in style 4-Slot Battery Charger with LEDs to indicate Charge State. Can be docked and powered in the 5-Slot Cradle via adapter cup (Sold Separately) or used standalone.



When used stand-alone requires Power Supply: PWR-BGA12V50W0WW and a DC Line cord: CBL-DC-388A1-01 and country specific AC line cord (Cords and Power Supplies Sold Separately). Compatible with both PowerPrecision and PowerPrecision Plus Batteries

### Required Power Supply and DC Cable for Battery Charger:

Power supply for 4-slot battery charger: 100-240 VAC, 12VDC, 4.16A.

(PN: PWR-BGA12V50W0WW)

**Requires:** Country specific AC grounded line cord.



DC cable for Level 6 power supply PWR-BGA12V50W0WW (12 VDC, 4.16A), 1.8 M length. (PN: CBL-DC-388A1-01)

## US AC Line Cord



### 23844-00-00R

US AC line cord, 7.5 feet long, grounded, three wire for power supplies.

\*See slide 17 for your country Line cord needs

# ZEBRA Charging Options

## 2-Slot ShareCradle



### ShareCradle, Charge & Ethernet Communication

The 2-Slot ShareCradle is designed to provide the best desktop solution. Available in Charge-Only or USB/Ethernet variants, the 2-Slot ShareCradles accommodate 1x TC70(x)/TC75(x) Series and 1x spare battery.

*Note: 2-Slot ShareCradles require power supply: PWR-BGA12V50W0WW and requires a DC line cord: CBL-DC-388A1-01 and country specific AC line cord (Cords and Power Supplies Sold Separately)*

**CRD-TC7X-SE2CPP-01:** 2-Slot Charge Only ShareCradle for 1 terminal and one spare battery. Compatible with both PowerPrecision and PowerPrecision Plus batteries.

**CRD-TC7X-SE2EPP-01:** 2-Slot USB/Ethernet ShareCradle for 1 terminal and one spare battery. Compatible with both PowerPrecision and PowerPrecision Plus batteries.

## 2-slot Ethernet Module



### MOD-MT2-EU1-01

USB to Ethernet Module integrated into the bottom of the cradle providing a mechanical switch between USB and Ethernet

## Required for 2-Slot cradle



Power supply for 2-slot cradle: 100-240 VAC, 12VDC, 4.16A. (PN: PWR-BGA12V50W0WW)  
**Requires:** Country specific AC grounded line cord.



DC cable for power supply PWR-BGA12V50W0WW. (12 VDC, 4.16A) 1.8m length. (PN: CBL-DC-388A1-01)

## US AC Line Cord



### 23844-00-00R

US AC line cord, 7.5 feet long, grounded, three wire for power supplies.

\*See slide 17 for your country Line cord needs



# ZEBRA Charging Options

## Required for Multi-Slot ShareCradle

Power supply for multi-slot cradle: 100-240 VAC, 12VDC, 9A. (PN: PWR-BGA12V108W0WW)

**Requires:** Country specific AC grounded line cord (sold separately).



DC cable provides power from the power supply to multi-slot charge-only and Ethernet cradles.  
(PN: CBL-DC-381A1-01)



## US AC Line Cord



**23844-00-00R**

US AC line cord, 7.5 feet long, grounded, three wire for power supplies.

\*See slide 17 for your country Line cord needs

### Notes:

1. 5-Slot Cradles require Power Supply: **PWR-BGA12V108W0WW**; and requires a DC line cord: **CBL-DC-381A1-01** and country specific AC line cord (*cords sold Separately*)
2. Optional 4-Slot Battery Charger, 4-Slot Battery Charger Adapter Cup and Mounting Accessory sold separately

## Multi-Slot ShareCradle



The 5-Slot ShareCradles provide high density & flexibility. Available in Charge-Only or Ethernet variants, the 5-Slot Share Cradles can accommodate either 5x or 4x TC70(x)/TC75(x) Series plus 4x spare batteries off of one power supply via the 4-Slot Battery Charger Adapter Cup (*Sold Separately*). The 5-Slot ShareCradles can be racked/mounted in a standard 19 in. rack system via the mounting accessory.

**CRD-TC7X-SE5C1-01:** TC7X 5-Slot Charge-Only Cradle for 5x TC7Xs or 4x TC7Xs 4x spare batteries off of one power supply via Adapter Cup sold separately. PWR-BGA12V108W0WW, country specific AC line cord and DC Line Cord CBL-DC-382A1-01 (Cords and Power Supplies Sold Separately)

**CRD-TC7X-SE5EU1-01:** TC7X 5-Slot Ethernet Cradle for 5x TC7Xs or 4x TC7Xs 4x spare batteries off of one power supply via Adapter Cup sold separately. PWR-BGA12V108W0WW, country specific AC line cord and DC Line Cord CBL-DC-382A1-01 (Cords and Power Supplies Sold Separately)

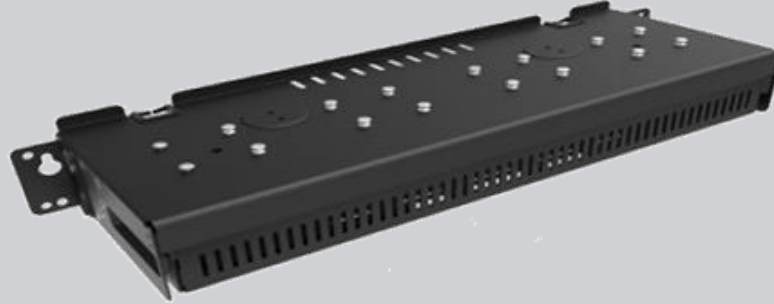
# ZEBRA Charging Options

## Mount Options for Multi-Slot Cradles

### MAXIMUM DENSITY

#### RACK MOUNTED SOLUTION:

The Rack/Wall Mount Bracket has been optimized to work on a standard 19-inch IT rack. The brackets can also be configured in different angles for maximum flexibility.



### Rack/Wall Bracket for Multi-Slot ShareCradle



#### BRKT-SCRD-SMRK-01

Rack/Wall mounting bracket is designed to help customers install any Single-Slot or Multi-Slot ShareCradle on a wall or a 19" IT rack. The bracket also enables the installation of up to four 4-Slot Spare Battery Chargers together on a wall or standard 19" IT rack.

### 4-slot Battery Charging Solution

#### CUP-SE-BTYADP1-01

ShareCradle 4-Slot battery charger adapter cup. Allows for a 4-Slot Battery Charger to be charged and docked on the 5-Slot ShareCradles

#### CRD-TC7X-SE5C1-01

TC7X 5-Slot Charge-Only Cradle for 5x TC7Xs or 4x TC7Xs 4x spare batteries off of one power supply via Adapter Cup sold separately. PWR-BGA12V108W0WW, country specific AC line cord and DC Line Cord CBL-DC-382A1-01 (Cords and Power Supplies Sold Separately)



# ZEBRA Trigger Handle

## TC7X Attachable Trigger



### TRG-TC7X-SNP1-02

TC70(x)/TC75(x) Snap-On Trigger Handle. Easily attaches to bottom housing and easily removed to access the battery. The trigger handle includes a wrist tether that is attached to the trigger and the bottom housing of the device

New

### ShareCradle Compatibility Varies Based on Trigger Cleat

For Use With Charge-Only ShareCradle	<b>ADP-TC7X-CLHTH-10</b> - pack of 10 pairs of cleats + straps – compatible to leave in with trigger gun
For Use With Ethernet ShareCradle	<b>ADP-TC7X-CLPTH1-20</b> - pack of 20 cleats – compatible to leave in (but trigger gun needs to be removed)

## Trigger Handle Service Plan

The TC7X trigger accessory provides users with significant flexibility as they adapt the TC7X device to different operations within their retail environment. The TC7X trigger accessory is considered a consumable item which may need to be replaced during the life of a TC7X. Therefore, Zebra highly recommends the purchase of a Zebra trigger handle service plan.

\*For dedicated high-intensity scanning operations, customers are urged to consider Zebra mobile devices with integrated gun handles such as the MC33 and TC8000.

OPT-TRGMNT-3	3-Year Zebra OneCare Comprehensive Trigger Maintenance
OPT-TRGMNT-5	5-Year Zebra OneCare Comprehensive Trigger Maintenance

## Hand Strap

### SG-TC7X-HSTR2-03

3-pack of hand straps. Made of leather and Hypalon, this adjustable hand strap provides comfort to support a wide range of hand sizes while resisting wear in rugged environments. The hand strap also provides a loop tether point for the optional stylus. Plastic clip latches into terminal for easy insertion and removal



## Soft Holster

### SG-TC7X-HLSTR1-02

Soft holster for vertical orientation with open bucket design to accommodate hand strap and snap-ons, such as the MSR for easy insertion and removal. Includes loop for optional stylus



## Stylus & Screen Protector

### SG-TC7X-STYLUS-03

Stylus with coiled tether 3-pack. Made of conductive carbon-filled plastic material, optimized for enterprise durability.



### SG-TC7X-SCRNTMP-01

This optional screen protector safeguards the display, eliminates sunlight glare and maintains clarity of your mobile computer. Part contains 1 each, and compatible with the TC70x/TC75x (Android) Only



## Rigid Holster

### SG-TC7X-RHLSTR1-01

Rigid Holster with snap-in design. Rotating Belt Clip with ability to insert in either direction. Compatible with Snap-on Accessories excluding the Trigger Handle.



# ZEBRA Audio Headsets

## Rugged Headset

### HS2100-OTH

HS2100 Rugged Wired Headset Over-The-Head Headband includes HS2100 Boom Module and HSX100 OTH Headband Module



## Audio Jack Adapter

### ADP-TC7X-AUD35-01

2.5MM Female to 3.5MM Male Headset Adapter Cable.



## Headset

### HDST-35MM-PTVP-01

Over the ear headset with mic and PTT button. Requires 3.5MM adapter cable CBL-TC51-HDST35-01 (sold separately).



## Bluetooth Headset

### HS3100-OTH

HS3100 Rugged Bluetooth Headset Over-The-Head Headband includes HS3100 Boom Module and HSX100 OTH Headband Module





## Rugged Charge Cable

### CHG-TC7X-CBL1-01

TC7X Charging Cable Cup. Requires PWR-BUA5V16W0WW, DC Cable CBL-DC-383A1-01 and Country specific AC Line Cord sold separately



## MSR Adapter

### MSR-TC7X-SNP1-01



Provides charging and communications. Snaps on to bottom of TC7X device. Can be used with any consumer grade USB-C cable. Plugs into any standard wall adapter or USB port. USB-C cable sold separately

## USB Charge Cable

### CBL-TC7X-USB1-01

Snap-On USB/Charge Cable. For charging, PWR-BUA5V16W0WW, DC cable CBL-DC-383A1-01 and Country Specific sold separately



## Headset Adapter

### ADP-35M-QDCBL1-01



3.5MM Quick-Disconnect Headset Adapter Cable. Connects headsets with Quick-Disconnect connector to devices with a standard 3-pole 3.5mm barrel jack connector.

## DX30

### 3PTY-BTEK-DX30

DX30 Key Fob/ 620mAh Battery (Charging accessories and SmartDex License sold separately)



## DX30 Charge Cable

### 3PTY-BTEK-DX30CHG

DX30 Charge Cable



## DX30 Charger

### 3PTY-BTEK-DX304SC

DX30 4-Slot Charger



## DEX Cable

### CBL-TC7X-DEX1-01

Snap-on Cable for DEX Communication



## Vehicle Cradle

### CRD-TC7X-VCD1-01

TC7X Vehicle Data Communication and Charge Cradle Kit with USB I/O Hub. For power it requires CHG-AUTO-CLA1-01 or hard wired CHG-AUTO-HWIRE1-01, both sold separately.



## Vehicle Cradle

### CRD-TC7X-CVCD1-01

TC7X Charge Only Vehicle Cradle. Compatible with snap on accessories (excluding Trigger handle). Optional CLA or Hardwire Charging, Windshield or Hard installation via Ram mounts sold separately.



## Auto Charge Cable

### CHG-TC7X-CLA1-01

TC7X Auto Charging Cable Cup. Snaps onto the bottom of TC75, allowing the users to charge their TC75 via a Vehicles Cigarette Light Adapter CLA.



## Hardwire Auto Charge Cable

### CHG-AUTO-HWIRE1-01

Hardwire Auto Charge Cable for the vehicle cradle. Allows for installation into Vehicles fuse box. Does not work without Cradle (Sold Separately)



## Cigarette Light Adapter

### CHG-AUTO-CLA1-01

Auto Charger for TC7X Vehicle Cradle sold separately. Cigarette light adapter to Barrel Jack.



## Ram Suction Cup Mount

### RAM-B-166U

RAM Twist Lock Suction Cup with Double Socket Arm and Diamond Base Adapter; Overall Length: 6.75". Compatible with both charge and communications vehicle cradles.



## RAM Mount Ball Base

### RAM-B-238U

RAM 2.43" x 1.31" Diamond Ball Base w/ 1" Ball



## ProClip Swivel Mount

### 3PTY-PCLIP-215500

Tilt swivel mount for TC70/TC75 vehicle cradle





## ProClip Pedestal Mount Kit

**3PTY-PCLIP-710834**

4" Pedestal mounting kit for TC70(x)/TC75(x) vehicle cradle.



## ProClip Pedestal Mount Kit

**3PTY-PCLIP-710835**

4" Pedestal mounting kit for TC70(x)/TC75(x) vehicle cradle (90 degree 2 inch center rod).



## ProClip Pedestal Mount Kit

**3PTY-PCLIP-710836**

2" Pedestal mounting kit for TC70(x)/TC75(x) vehicle cradle.



## ProClip Forklift Cradle



**3PTY-PCLIP-710832**

TC70(x)/TC75(x) Forklift cradle  
with 8" forklift grill mounting  
hardware

## ProClip Forklift Cradle



**3PTY-PCLIP-710833**

TC70(x)/TC75(x) Forklift cradle with 2"  
forklift grill mounting hardware

## ProClip Forklift Mount

**3PTY-PCLIP-215772**

Forklift mount (clamps to post or  
grill on forklift)





# ZEBRA Country Specific AC Line Cord Options

## Country

## Grounded AC Line Cord

Abu Dhabi	50-16000-220R: AC line cord, 1.8 m, grounded, three wire, CEE 7/7 plug.
Australia	50-16000-217R: AC line cord, 1.9 m, grounded, three wire, AS 3112 plug.
Bolivia	50-16000-220R: AC line cord, 1.8 m, grounded, three wire, CEE 7/7 plug.
China	50-16000-217R: AC line cord, 1.9 m, grounded, three wire, AS 3112 plug. 50-16000-257R: AC line cord, 1.8 m, grounded, three wire, IEC 60320 C13 plug.
Dubai	50-16000-220R: AC line cord, 1.8 m, grounded, three wire, CEE 7/7 plug.
Egypt	50-16000-220R: AC line cord, 1.8 m, grounded, three wire, CEE 7/7 plug.
Europe	50-16000-220R: AC line cord, 1.8 m, grounded, three wire, CEE 7/7 plug.
Hong Kong	50-16000-219R: AC line cord, 1.8 m, grounded, three wire, BS1363 plug.
India	50-16000-669R: AC line cord, 1.9 m, grounded, three wire, BS 546 plug.
Iran	50-16000-220R: AC line cord, 1.8 m, grounded, three wire, CEE 7/7 plug.
Iraq	50-16000-219R: AC line cord, 1.8 m, grounded, three wire, BS1363 plug.
Israel	50-16000-672R: AC line cord, 1.9 m, grounded, three wire, S132 plug.
Italy	50-16000-671R: AC line cord, 1.8 m, grounded, three wire, CIE 23-16 plug.
Japan	50-16000-218R: AC line cord, 1.8 m, grounded, three wire, NEMA 1-15P plug.
Korea	50-16000-220R: AC line cord, 1.8 m, grounded, three wire, CEE 7/7 plug.
Malaysia	50-16000-219R: AC line cord, 1.8 m, grounded, three wire, BS1363 plug.
Russia	50-16000-220R: AC line cord, 1.8 m, grounded, three wire, CEE 7/7 plug.
Singapore	50-16000-219R: AC line cord, 1.8 m, grounded, three wire, BS1363 plug.
New Guinea	50-16000-217R: AC line cord, 1.9 m, grounded, three wire, AS 3112 plug.
United Kingdom	50-16000-219R: AC line cord, 1.8 m, grounded, three wire, BS1363 plug.
United States	23844-00-00R: US AC line cord, 7.5 ft. long, grounded, three wire. 50-16000-221R: AC line cord, 1.8 m, grounded, three wire, USA NEMA 5-15P. 50-16000-678R: AC line cord, 36in. long, grounded, three wire.
Vietnam	50-16000-220R: AC line cord, 1.8 m, grounded, three wire, CEE 7/7 plug.

## Country

## Ungrounded AC Line Cord

Argentina	50-16000-255R: AC line cord, 1.8 m, ungrounded, two wire, CEE7/16.
Australia	50-16000-666R: AC line cord, 1.8 m, ungrounded, two wire, AS 3112 plug.
Belgium	50-16000-255R: AC line cord, 1.8 m, ungrounded, two wire, CEE7/16.
Bermuda	50-16000-670R: AC line cord, 1.8 m, ungrounded, two wire, BS 1363 plug.
Chile	50-16000-255R: AC line cord, 1.8 m, ungrounded, two wire, CEE7/16.
China	50-16000-664R: AC line cord, 1.8 m, ungrounded, two wire, GB 2099-1-1996 plug.
France	50-16000-255R: AC line cord, 1.8 m, ungrounded, two wire, CEE7/16.
Germany	50-16000-255R: AC line cord, 1.8 m, ungrounded, two wire, CEE7/16.
Hong Kong	50-16000-670R: AC line cord, 1.8 m, ungrounded, two wire, BS 1363 plug.
India	50-16000-668R: AC line cord, 1.8 m, ungrounded, BS 546 plug.
Iraq	50-16000-670R: AC line cord, 1.8 m, ungrounded, two wire, BS 1363 plug.
Italy	50-16000-255R: AC line cord, 1.8 m, ungrounded, two wire, CEE7/16.
Malaysia	50-16000-670R: AC line cord, 1.8 m, ungrounded, two wire, BS 1363 plug.
Netherlands	50-16000-255R: AC line cord, 1.8 m, ungrounded, two wire, CEE7/16.
New Zeland	50-16000-666R: AC line cord, 1.8 m, ungrounded, two wire, AS 3112 plug.
Singapore	50-16000-670R: AC line cord, 1.8 m, ungrounded, two wire, BS 1363 plug.
South Korea	50-16000-255R: AC line cord, 1.8 m, ungrounded, two wire, CEE7/16.
Spain	50-16000-255R: AC line cord, 1.8 m, ungrounded, two wire, CEE7/16.
Sweeden	50-16000-255R: AC line cord, 1.8 m, ungrounded, two wire, CEE7/16.
United Kingdom	50-16000-670R: AC line cord, 1.8 m, ungrounded, two wire, BS 1363 plug.
United States	50-16000-182R: US AC line cord, ungrounded, two wire.
Vietnam	50-16000-255R: AC line cord, 1.8 m, ungrounded, two wire, CEE7/16.