

# WINTEC



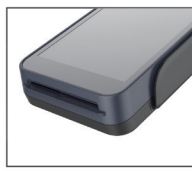
## A9 Mobile POS



1D 2D Barcode Scanner



Contactless Card Reader



IC Card Reader



Printer



MSR

## Features

- ✦ 5.5 inch PCT touch screen, integrated thermal printer and cameras
- ✦ Multi-payment methods supportable
- ✦ EMV/PBOC/QPBOC L1&L2, PCI4.1, UPTS2.0 approved
- ✦ Various connectivity options
- ✦ Ergonomic, small, fashion and portable

Specification



Code	A9
OS	Android 5.1
CPU	Qualcomm Quad Core, 1.2GHz
Storage	1GB RAM + 8GB ROM Flash (up to 2GB RAM + 16GB ROM Flash)
Exp. Storage	TF card, up to 32GB (optional)
Touch Screen	5.5" HD, 1280×720; PCAP, e-signature Supported
Physical Key	Power, Volume+/-, Shortcut Key
	ISO7811 1/2/3 Tracks
	ISO7816, EMV 4.2 LEVEL 1&2 Complied
IC Card Reader	ISO7816, EMV 4.2 LEVEL 1&2 Complied
Contactless Card Reader	ISO/IEC 14443, Type A&B and MiFare Card Supported, PAYPASS and PAYWAVE Complied
Front Camera	0.3M Pixel, 1D/2D Supportable (optional)
Back Camera	5M Pixel, 1D/2D Supportable
Built-in Printer	58mm Thermal Printer, 40mm Diameter Paper Roll
Connectivity	Wi-Fi, Bluetooth: V4.1+BLE, 4G/3G/2G, Dual SIM Cards Available
PIN Keypad	Built-in Touch PIN Input, ANSI X9.8/ISO9564/ANSI X9.9/ISO8731, Master Key/Session Key/Fixed, DUKPT, DES/3DES/RSA/SHA-256/AES
GPS	Yes (optional)
Power	DC 5V/2A
Battery	5200mAh/3.6V Li-MH
Interfaces	1*Micro USB OTG, USB2.0 HS Compatible, 1*DC; 1*3.5mm Headphone Jack, 1* Mic/1*Speaker/1*Buzzer, 1*SIM (Micro SIM), 1*TF, 1*PSAM, 1*SIM/PSAM
Environmental	Operating Temperature: 32°F to 122°F, Storing Temperature: 14°F to 140°F, Relative Humidity: 10% to 90%, Non-condensing
Certifications	EMV L1/L2, PCI4.1 International Certification, CE, FCC, RoHS
Dimensions (mm)	200*85*62





## A9 Mobile POS



### Qingdao Wintec System Co., Ltd.

#### Headquarter:

Address: Wintec Park, Xinye Road, High-Tech Zone, Qingdao, China

Tel: +86 532 5571 6831

Fax: +86 532 5571 6899

Email: [postmaster@wintec.cn](mailto:postmaster@wintec.cn)

Website: [www.wintec.cn](http://www.wintec.cn)

#### UK Branch:

Address: 39 Greville Street, London, EC1N 8PJ

Tel: +44 20 7242 6146

Fax: +44 20 7813 3065

Email: [sales@wintecpos.com](mailto:sales@wintecpos.com)

Website: [www.wintecpos.com](http://www.wintecpos.com)

