

Rugged-Reliable Two-way Radio



Fashionable & Reliable PMR446

- Power Output: 0.5W
- Compact and Fashionable Design
- Double Color Injection Technology
- Built-in Large Scale Integrated Circuit
- High Audio Output, Superb Clear Audio Quality

S555YT PMR 446

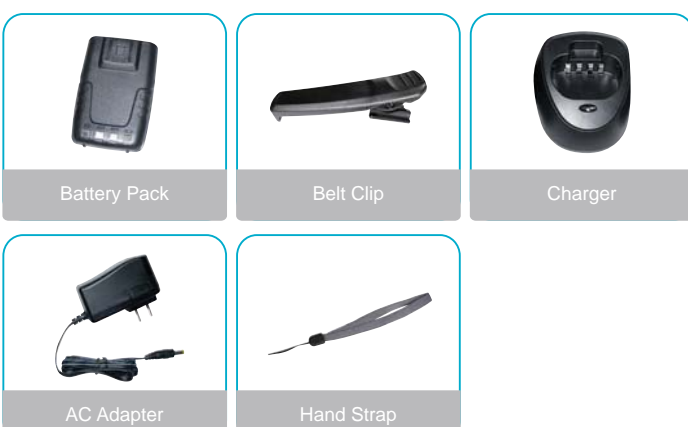
Handheld Two-way Radio

<http://www.yehuda-tal.com>

Main Features

- 16 Channels
- Power Output 0.5W
- Built in CTCSS and DCS
- PC Programming
- Auto Battery Save
- Emergency Alert
- Voice Guide
- VOX Function
- Time Out Time(TOT)
- Busy Channel Lockout
- High/low Power Selective
- Auto-scan and Priority Scan
- Large Li-Ion Battery 1300mAh
- Built-in Large Scale Integrated Circuit
- Wide/Narrow Bandwidth Selective
- Superb Clear and Strong Audio Quality

Accessories



General

Frequency Range	446MHz
Channel Capacity	16CH
Channel Spacing	12.5KHz
Operating Voltage	7.4V DC ± 20%
Antenna Impedance	50Ω
Dimension (Antenna Excluded)	55x28x105mm
Weight(Antenna & Battery Included)	215g

Transmitter

Frequency Error	≤ 5 X 10 ⁻⁶
RF Power Output	≤ 0.5W
Modulation Limiting	≤ 5KHz
Modulation Distortion	Less than 5%
Spurious Emission	≥ 65dB

Receiver

Sensitivity	12dB SINAD(0.18μV)
Adjacent Channel Selectivity	≥ 55dB
Spurious Response Rejection	≥ 55dB
Intermodulation	≥ 55dB
Audio Distortion	≤ 5%
Audio Output	≥ 250mW

Above specifications are tested according to TIA/EIA-603.
Above specifications are subject to change without any notice due to technology enhancement.

Your Local Dealer